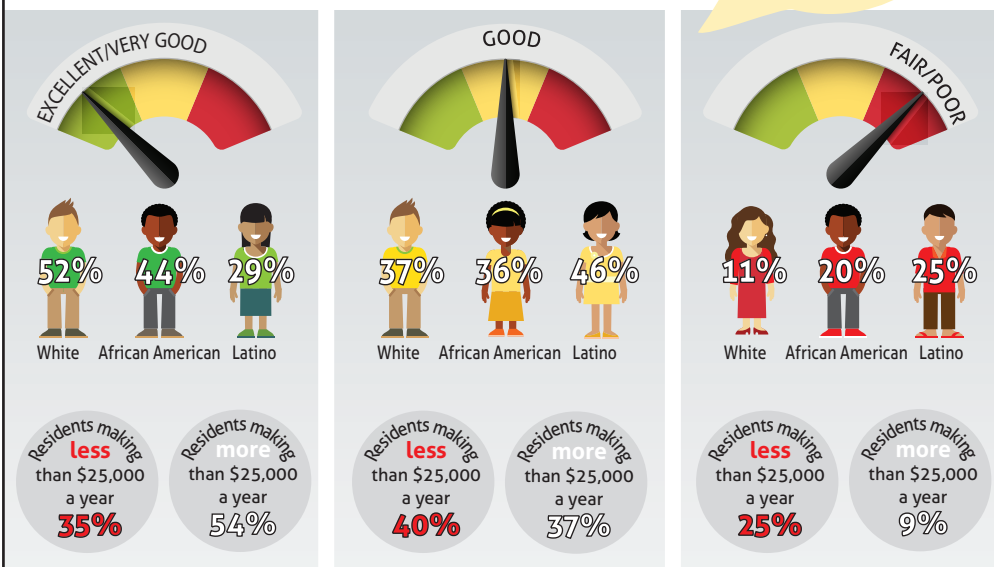
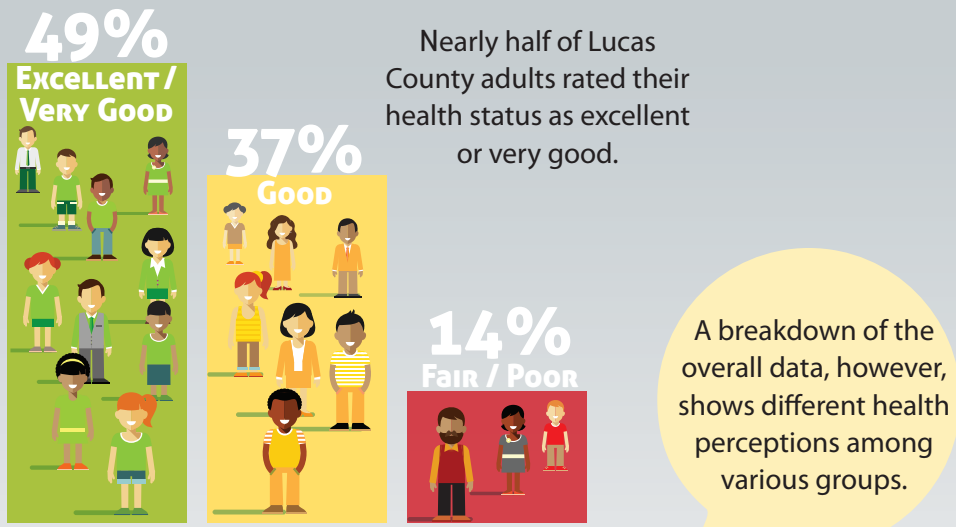


ADULT HEALTH PERCEPTIONS IN LUCAS COUNTY



Additionally, Lucas County adults are most likely to rate their health **FAIR OR POOR** if they:

- 38%** have diabetes
- 26%** are separated
- 25%** have high blood pressure or high cholesterol
- 22%** are 65 or older



FOR MORE INFORMATION, PLEASE VISIT HEALTHYLUCASCOUNTY.ORG

SOURCE: 2016/2017 LUCAS COUNTY COMMUNITY HEALTH ASSESSMENT