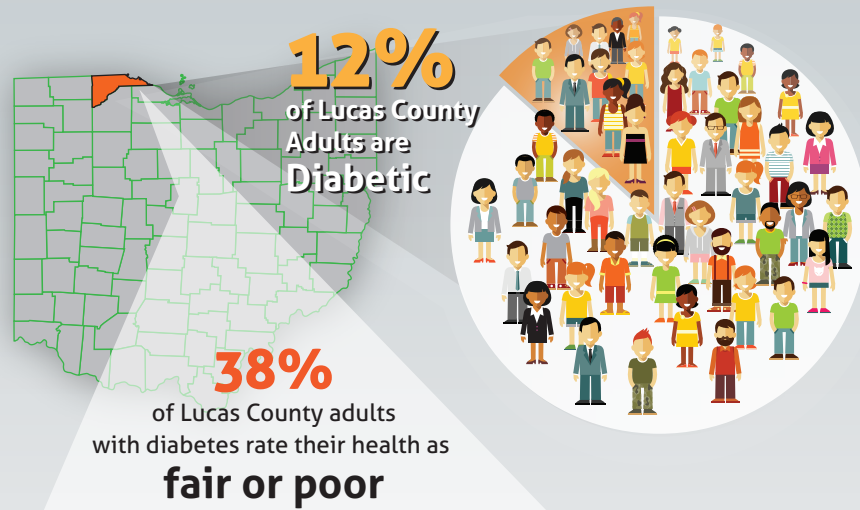


DIABETES

IN LUCAS COUNTY

More than **29 million** Americans have diabetes – and **86 million** have **prediabetes**, a serious health condition that increases the risk of type 2 diabetes and other chronic diseases.



Lucas County adults diagnosed with diabetes also had at least one of these conditions:

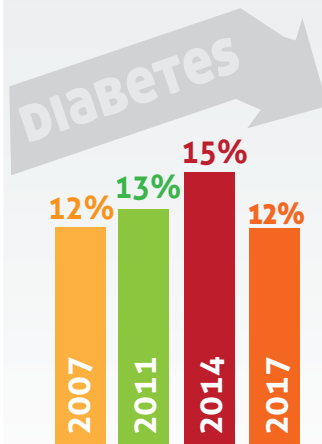
OVERWEIGHT/
OBESE



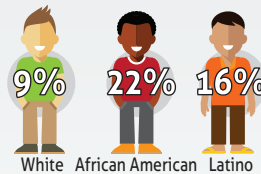
79% HIGH
BLOOD
PRESSURE

63% HIGH
CHOLESTEROL

The percentage of Lucas County adults with diabetes has started to decline.



While the overall diabetes rate among Lucas County adults is lower, some groups have higher rates than others.



Residents making less than \$25,000 a year

21%

Residents age 65+

28%



HEALTHY
LUCAS COUNTY

FOR MORE INFORMATION, PLEASE VISIT HEALTHYLUCASCOUNTY.ORG

SOURCE: CENTERS FOR DISEASE CONTROL AND PREVENTION
AND 2016/2017 LUCAS COUNTY COMMUNITY HEALTH ASSESSMENT