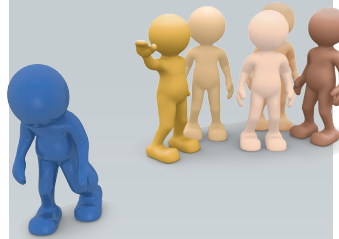


CONDITIONS AFFECTING THE HEALTH

OF LUCAS COUNTY RESIDENTS

The conditions where people are born, live, play, learn, work and age all have a role in their overall health and well-being. Here are some of the conditions – which are known as **social determinants of health** – that Lucas County residents face based on findings in the 2016/2017 Lucas County Community Health Assessment.

9% of adults were abused physically, sexually, emotionally, financially or verbally in the last year.



About **27%** of **African American** and **21%** of **Latino** adults reported feeling upset, angry, sad or frustrated by how they were treated based on their race in the past 30 days.

In the last month, **16%** of adults were concerned about having enough food for their families.



16% of adults had bills they could not pay.



22% attempted to get assistance from a social service agency.

11% of adults considered their neighborhood to be not at all safe from crime.



27% considered it slightly safe.

In the last year, **11%** of adults thought insects threatened their health.



1% of adults were homeless in the last year.



11% of adults did not have a car.



HEALTHY
LUCAS COUNTY

FOR MORE INFORMATION, PLEASE VISIT HEALTHYLUCASCOUNTY.ORG

SOURCE: 2016/2017 LUCAS COUNTY COMMUNITY HEALTH ASSESSMENT